

PROJECT : SPACE TAFT
LOCATION : 1952 TAFT AVE., MALATE, MANILA
OWNER : PACIFIC AVELEX
SUBJECT : PROGRESS REPORT
DATE : 07-Apr-16

STRUCTURAL WORKS

- A. **PILE DRIVING**
-100% completed
- B. **FOUNDATION**
PILE CAP
-100% completed
- C. **STP**
97% COMPLETED STRUCTURAL WORKS



- D. **CISTERN TANK**
97% COMPLETED STRUCTURAL WORKS



- E. **Column and Shearwall**
99% COMPLETED (CONCRETED UP TO ROOFDECK FLOOR LEVEL)



- F. **Beams and Girders**
99% COMPLETED (CONCRETED UP TO ROOFDECK FLOOR LEVEL)



G. Slab
98% COMPLETED

ROOFDECK FLOOR SLAB



H. Main Stairs
50% completed (1st to 15th floor level)



I. Fire Exit Stairs
60% completed (3rd to 21st floor)



ARCHITECTURAL WORKS

A. Masonry Works

Floor Level

- a Ground floor
- b Mezzanine floor
- c 2nd floor
- d 3rd floor
- e 4th floor
- f 5th floor
- g 6th floor
- h 7th floor
- i 8th floor
- j 9th floor
- k 10th floor
- l 11th floor

(Interior & Exterior walls)

% Accomplishment

- 67.00 %
- 90.00 %
- 92.00 %
- 92.00 %
- 100.00 %
- 100.00 %
- 98.00 %
- 98.00 %
- 97.00 %
- 98.00 %
- 98.00 %
- 97.00 %

m	12th floor	98.00 %
n	13th floor	74.00 %
o	14th floor	92.00 %
p	15th floor	94.00 %
q	16th floor	92.00 %
r	17th floor	94.00 %
s	18th floor	92.00 %
t	19th floor	94.00 %
u	20th floor	63.00 %
v	21st floor	57.00 %
w	22nd floor	53.00 %
x	23rd floor	34.00 %
y	24th floor	26.00 %
z	25th floor	34.00 %
a.a	26th floor	34.00 %
a.b	27th floor	4.00 %
a.c	28th floor	4.00 %
a.d	29th floor (additional-penthouse)	4.00 %

Note :

Exterior walls -up to 26th floor

Interior walls -up to 22th floor

Masonry Pictures :



B. Ceiling Works at Hallway

<u>Floor Level</u>	<u>% Accomplishment</u>
mez. Floor	40%
4th floor	100%
5th floor	95%
6th floor	95%
7th floor	95%
8th floor	95%
9th floor	95%





B.a Cladding of Hallway Pipe Chase

<u>Floor Level</u>	<u>% Accomplishment</u>
4th floor	100%
5th floor	100%
6th floor	100%
7th floor	100%
8th floor	100%
9th floor	95%
10th floor	100%



B.b Cladding of Modular Toilet

<u>Floor Level</u>	<u>% Accomplishment</u>
4th floor	100%
5th floor	100%
6th floor	100%
7th floor	95%
8th floor	70%



C. Installation of Door Jambs at Units

341/490 door jamb installed (69%)



D. Installation of Unit Doors and RFID Locksets

79/490 units installed (16%)



E. Installation of louver Doors at EE room

26/26 units installed (100%)



F. Modular Toilets

100/490 units installed (20%)



G. Painting Works

Interior Painting

<u>Floor Level</u>	<u>% Accomplishment</u>
4th floor	100%
5th floor	95%
6th floor	95%
7th floor	95%
8th floor	85%
9th floor	50%
10th floor	0%
11th floor	15%





H. Floor Finishing Works

Hallway Floor Tiles

<u>Floor Level</u>	<u>% Accomplishment</u>
4th floor	98%
5th floor	95%
6th floor	95%
7th floor	95%
8th floor	95%
9th floor	95%
10th floor	95%
11th floor	95%
12th floor	90%
13th floor	0%
14th floor	70%
15th floor	70%
16th floor	70%
17th floor	70%
18th floor	20%

Unit Vinyl Tiles

<u>Floor Level</u>	<u>% Accomplishment</u>
4th floor	100%
5th floor	100%
6th floor	100%



H. Installation of Unit Windows

164/490 units installed 33% completed



ELECTRICAL WORKS

A. Roughing-ins

- 1 Lighting System
- 2 Convenience Outlet System
- 3 Power Feeder Lines
- 4 Panelboards/Circuit Breakers/ MC's
- 5 CCTV System
- 6 CATV System
- 7 Telephone System
- 8 Fire Alarm System
- 9 Lightning Protection System
- 10 Grounding System

% Accomplishment

- 90.00 %
- 85.00 %
- 90.00 %
- 55.00 %
- 90.00 %
- 90.00 %
- 90.00 %
- 90.00 %
- 90.00 %
- 90.00 %

B. Wiring

- 1 Lighting System
- 2 Convenience Outlet System
- 3 Power Feeder Lines
- 4 CCTV System
- 5 CATV System
- 6 Telephone System
- 7 Fire Alarm System
- 8 Lightning Protection System
- 9 Grounding System

- 45.00 %
- 45.00 %
- 45.00 %
- 45.00 %
- 45.00 %
- 45.00 %
- 45.00 %
- %
- %

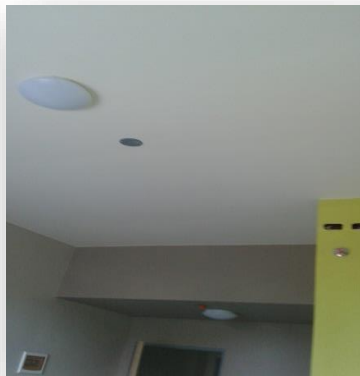
C. OWNERS SUPPLIED ITEMS (Installation Only)

- 1 Wiring Devices for Lighting System
- 2 Wiring Devices for Conv. Outlets
- 3 Wiring Devices for CATV
- 4 Wiring Devices for Telephone
- 5 Panelboards and Circuit Breakers
- 6 Busway Equipments
- 7 Fire Alarm Equipments
- 8 Lighting Fixtures
- 9 Lightning Protection Equipment

- %
- %
- %
- %
- 40.00 %
- %
- %
- 5.00 %
- %



4F Hallway Lightings



4F Rooms Lightings



Modular Toilet Lighting



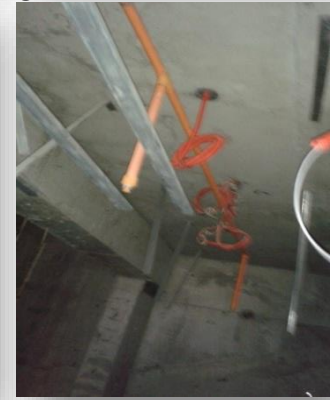
Amenities Lightings



Swimming Pool Lightings



9F Room Electrical Installation



10F Hallway Electrical Installation



4F to 15F Meter Center & Wiring Installation at Electrical Room



4th floor to 15th Floor - Circuit Breaker & Wire Installation at Rooms



26F Electrical Roughing-ins

PLUMBING AND SANITARY WORKS

A. UPDATED PROGRESS ACCOMPLISHMENT REPORT

NO. FLOORS	PLUMBING WORKS	FIRE PROTECTION WORKS
1 GROUND FLOOR	77%	45%
2 MEZZANINE FLOOR	90%	90%
3 SECOND FLOOR	90%	90%
4 THIRD FLOOR	90%	90%
5 FOURTH FLOOR	93%	90%
6 FIFTH FLOOR	96%	90%
7 SIXTH FLOOR	96%	90%
8 SEVENTH FLOOR	90%	90%
9 EIGHT FLOOR	85%	85%
10 NINTH FLOOR	70%	80%
11 TENTH FLOOR	70%	65%
12 ELEVENTH FLOOR	70%	65%
13 TWELVE FLOOR	70%	65%
14 THIRTEEN FLOOR	70%	65%
15 FOURTEEN FLOOR	70%	65%
16 FIFTEEN FLOOR	70%	65%
17 SIXTEEN FLOOR	32%	55%
18 SEVENTEEN FLOOR	32%	55%
19 EIGHTEEN FLOOR	32%	55%
20 NINETEEN FLOOR	32%	55%
21 TWENTY FLOOR	32%	55%
22 TWENTY ONE FLOOR	32%	55%
23 TWENTY TWO FLOOR	32%	10%
24 TWENTY THREE FLOOR	3%	10%
25 TWENTY FOURTH FLOOR	3%	10%
26 TWENTY FIFTH FLOOR	3%	10%
27 TWENTY SIXTH FLOOR	3%	10%
28 TWENTY SEVENTH FLOOR	3%	10%
29 TWENTY EIGHT FLOOR	3%	10%
30 TWENTY NINTH FLOOR	3%	10%
31 ROOF DECK FLOOR	0%	0%
Accomplishment	46%	51%

a Pipe laying for Storm drain, Water line and Sanitary line, Air-con drain, Fire Protection pipe at Ground Floor.



b Parking Drain Line



c Main Sewrer Line



d Storm Drain Line And Water Line



e Swimming Pool Pumps and Drain Line



f Kitchenette and Modular Toilet



g Fire Protection, ITC and Auxiliary Drain Line



h Hydro Test/Leak Testing



1. Waterline



2. Sanitary Line



3. Air Con Drain Line





4. Fire Protection Line

MECHANICAL WORKS:

Installation of ELEVATOR

<u>Unit</u>	<u>% Accomplishment</u>
Elevator 1	62%
Elevator 2	80%
Elevator 3	90%



PERSPECTIVE VIEW :



Prepared by:

(ORIGINAL SIGNED)

Engr. Warren Sierra/Engr. Gabriel Tapel

EJAP Konstruct Inc.-P.E. (C.E./M.E.P.F.)

Construction Management-Space Taft